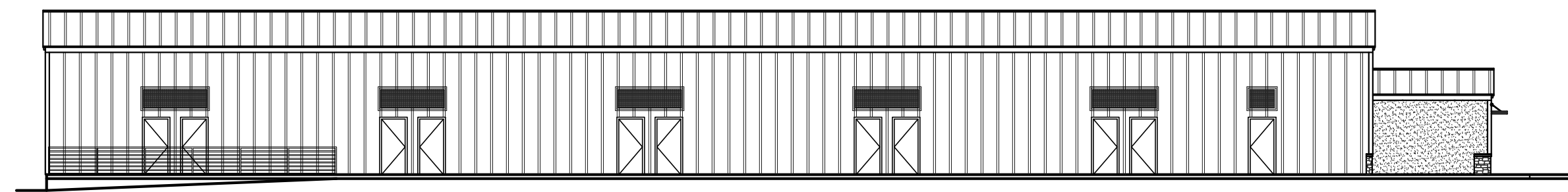
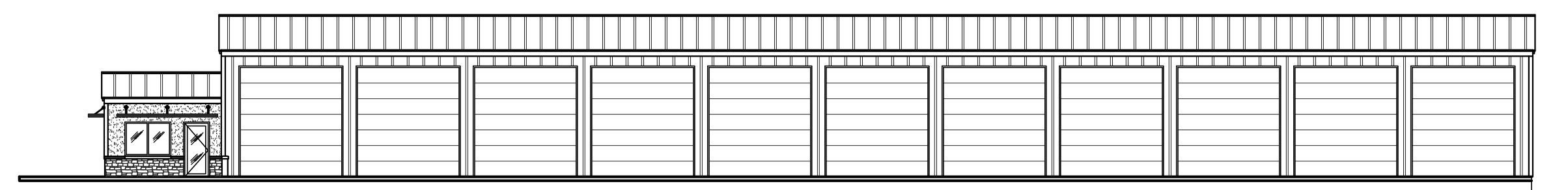
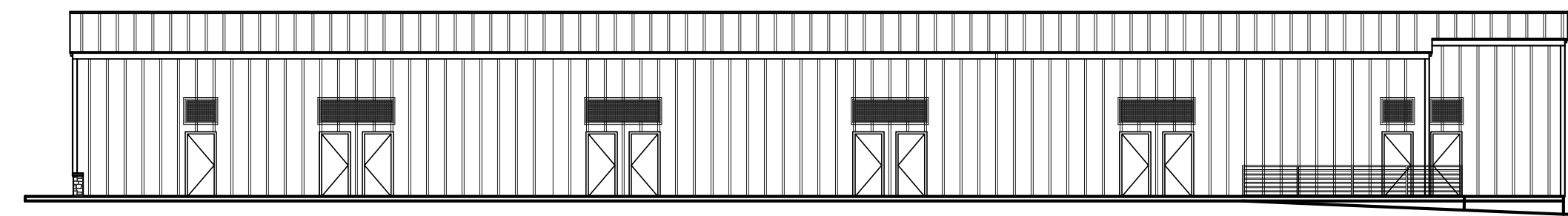
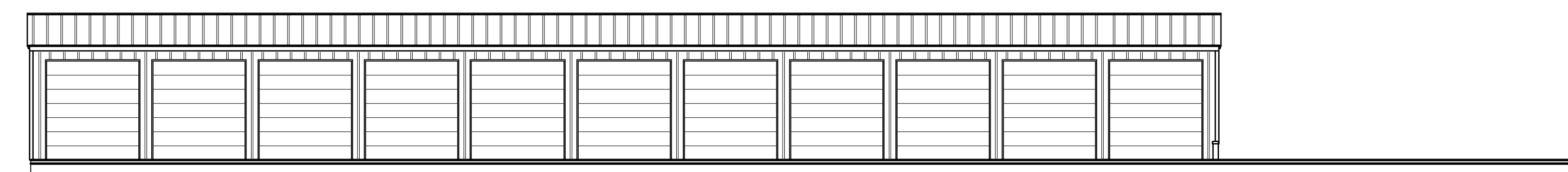


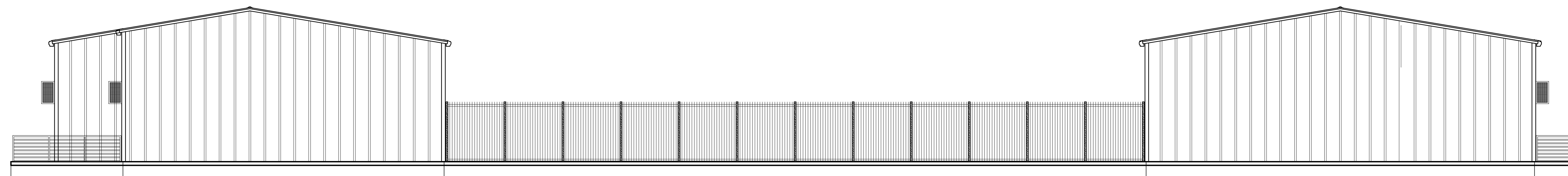
1 FRONT ELEVATION  
1/8" = 1'-0"



2 RV STORAGE GARAGES 1-11 FRONT & REAR ELEVATIONS  
1/16" = 1'-0"



3 RV STORAGE GARAGES 12-22 FRONT & REAR ELEVATIONS  
1/16" = 1'-0"



4 REAR ELEVATION  
1/8" = 1'-0"

I HEREBY CERTIFY THAT THIS PLAN, SPECIFICATIONS AND CONTRACT DOCUMENTS WERE PREPARED BY ME OR UNDER MY DIRECT SUPERVISION AND THAT I AM A DULY REGISTERED ARCHITECT UNDER THE LAWS OF THE STATE OF FLORIDA.  
NAME: PAUL KUEHN AIA  
LICENSE# AR0012166

ARCHITECT: PAUL KUEHN AIA  
TED GLASRUUD ASSOCIATES, MN, L.L.C.  
1700 WEST HIGHWAY 36, SUITE 650  
ROSEVILLE, MN 55113  
(651) 361-8941 FAX (651) 361-8949

DEVELOPER:  
TED GLASRUUD ASSOCIATES, FL, L.L.C.  
759 SOUTH FEDERAL HIGHWAY  
STUART, FLORIDA 34994  
(772) 761-0771 FAX (772) 761-0964

TREASURE COAST  
COMMERCE CENTER  
7241 S.W. JACK JAMES DRIVE  
STUART, FLORIDA 34997

PROPOSED BUILDING  
LIFESTYLE R.V. STORAGE  
LOTS 14 & 15  
EXTERIOR ELEVATIONS

DATE:  
DECEMBER 4, 2018  
DRAWN BY:  
JBP  
CHECKED BY:  
PAUL KUEHN  
SCALE:  
AS SHOWN  
REVISIONS:

SHEET NO.  
**A2**